

Fig.1

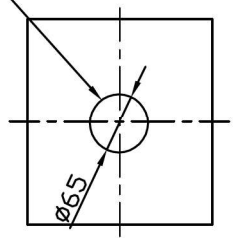
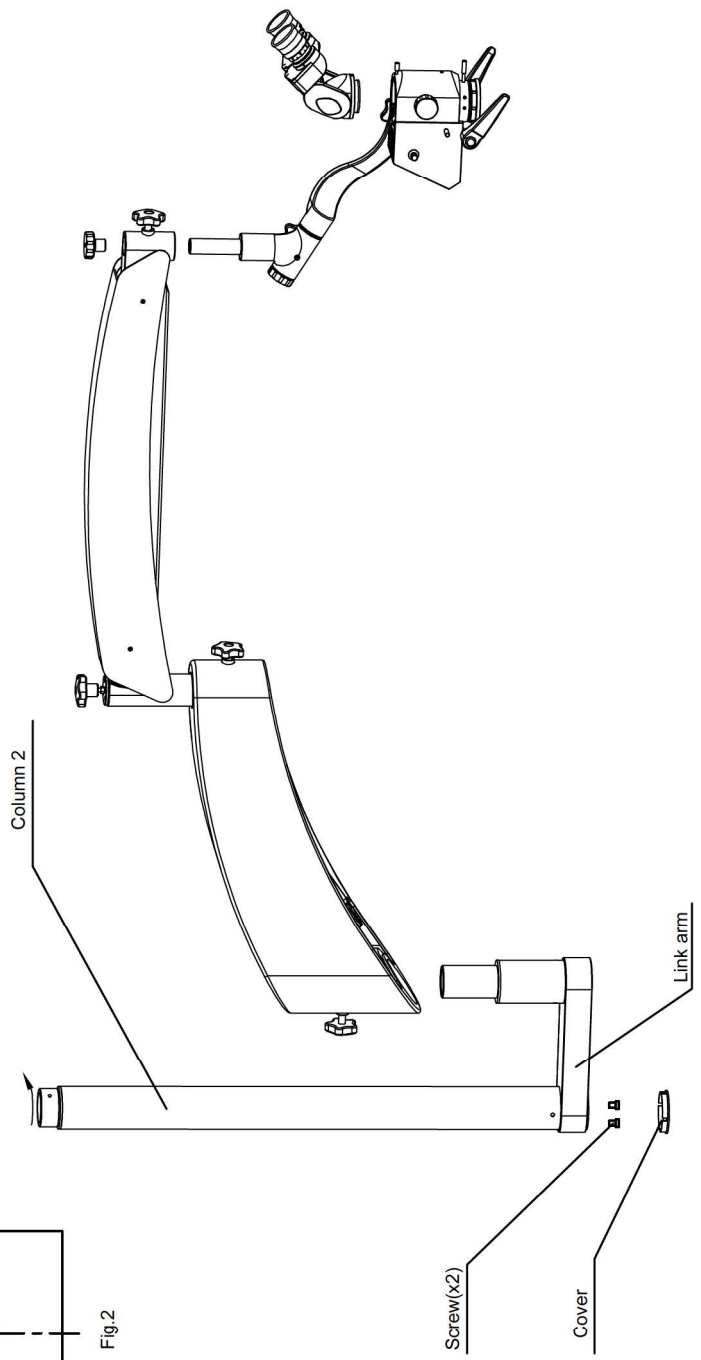


Fig.2



1. Please drill 4 hole ($\Phi 12\text{mm}$, 80mm deep) on the Roof (the roof should be concrete structure),the position of the hole please see Picture 1. Put in Expansion tube.
2. If there is Suspended ceiling, please take away one board and drill a hole in the center.
3. Connect the Plate with Column1,and tighten with screws.
4. Connect the Plate and Column1 together to the Roof, put in 4 Hex screws and tighten. Then put on the Suspended ceiling Board.
5. Unscrew 2 Hex screw of Column 2,and connect Column2 to Column1,then screw in these 2 Hex screws.
6. Take the cover of the Link Arm, connect Column 2 and Link Arm with the accessory screws.
7. Put the Cross Arm on the Link Arm to finish installation.